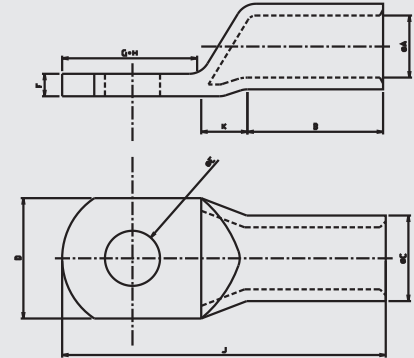


ALUMINUM LONG BARREL STUD TUBULAR TERMINAL ENDS FOR XLPE IS 8309 : 1993

Material Aluminum IS :5082



| Size mm ² | Stud Hole (E) | A | C | D | F | B | H | G | J | MG CAT NO. | Crimping Tools Code |
|----------------------|---------------|------|------|------|------|----|----|----|-----|------------|---------------------|
| 16 | 8.4 | 5.6 | 10 | 16 | 3.2 | 32 | 10 | 8 | 57 | MGAX-16 | MG-50BS |
| 25 | 8.4 | 6.8 | 12 | 16 | 4.9 | 32 | 10 | 8 | 57 | MGAX-25 | MG-70H |
| 35 | 10.5 | 8 | 14 | 20 | 5.7 | 42 | 12 | 10 | 72 | MGAX-35 | MG-70H |
| 50 | 10.5 | 9.3 | 16 | 21.5 | 6.6 | 42 | 12 | 10 | 72 | MGAX-50 | MG-70H |
| 70 | 13.0 | 11.6 | 18.5 | 25 | 7 | 52 | 15 | 13 | 90 | MGAX-70 | MG-120H |
| 95 | 13 | 12.4 | 22 | 30 | 8.4 | 56 | 15 | 13 | 95 | MGAX-95 | MG-120H |
| 120 | 13 | 14.7 | 23 | 31.5 | 8 | 56 | 20 | 15 | 102 | MGAX-120 | MG-300H |
| 150 | 13 | 16.4 | 25 | 34.5 | 8.3 | 60 | 20 | 15 | 108 | MGAX-150 | MG-300H |
| 185 | 17 | 18.4 | 28.5 | 39.5 | 10 | 60 | 20 | 15 | 110 | MGAX-185 | MG-300H |
| 240 | 17 | 21 | 32 | 44.5 | 10.6 | 70 | 24 | 19 | 130 | MGAX-240 | MG-300H |
| 300 | 17 | 23.4 | 34 | 47.5 | 10.4 | 70 | 24 | 19 | 130 | MGAX-300 | MG-1000 |
| 400 | 17 | 26 | 38.5 | 53.5 | 12.1 | 75 | 24 | 19 | 138 | MGAX-400 | MG-1000 |
| 500 | 17 | 29 | 44 | 60.5 | 14.6 | 80 | 24 | 22 | 148 | MGAX-500 | MG-1000 |
| 630 | 17 | 34 | 50 | 69.5 | 15.6 | 90 | 28 | 26 | 170 | MGAX-630 | MG-1000 |

*All dimensions in mm

WE CONNECT ENERGY

www.mgelectrica.com

F-41, MIDC Area, Satpur, Nasik-7, Maharashtra, India. Telfax: +91 253 2350961, 2350163 lugs@mgelectrica.com

For details about our other products and specifications please refer the corporate website

Disclaimer: M.G reserve the right product without prior, as part of its continual improvement programme. Whilst every effort is taken to ensure the accuracy of information contained in the sheet, M.G accepts no liability for matters arising as result of errors or omissions.