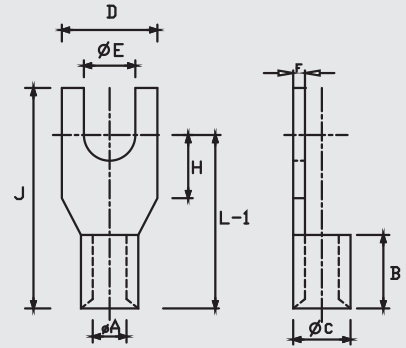


COPPER FORK TYPE TERMINAL

MATERIAL ETP COPPER IS : 1897:1983
SURFACE: TIN PLATED



Size mm ²	E	A	C	D	F	B	H	L-1	J	MG CAT NO.	Crimping Tools Code
0.5	3.4	1.1	2.9	6.5	0.8	5		11.1	15	MGF-0.5	MG-10
0.75	3.5	1.3	2.9	6.5	0.8	5		11.1	15	MGF-0.75	MG-10
1	3.4	1.3	2.9	5.8	0.8	5		10.8	15	MGF-1	MG-10
1.5	3.5	1.6	3.2	6.8	0.8	5	4.8	11.1	15	MGF-7249	MG-10
1.5	3	1.8	3.4	6.4	0.8	5	3.1	10.5	13	MGF-7250	MG-10
2.5	3.5	2.3	3.9	6.5	0.8	5	4.3	11.8	15	MGF-7251	MG-10
2.5	5	2.6	4.6	10.6	1	6.2	6.2	12.4	21	MGF-7280	MG-10
2.5	4.2	2.3	3.9	8	0.8	5			17.5	MGF-925	MG-10
4-6	3.1	3.5	5.5	6	1	6	5.5	11.5	15	MGF-7252	MG-10
4-6	3.5	3.5	5.5	6	1	6	5	11	15	MGF-7253	MG-10
10	6.5	4.5	6.9	16	1.2	8	11	19	27	MGF-7254	MG-10
10	8.2	4.5	6.9	16	1.2	8	11	19	27	MGF-7255	MG-10
10	5.4	4.5	6.9	10	1	8	12.2	22.7	31	MGF-10	MG-10
16	5.4	5.6	8	10	1.2	10		25	33	MGF-16	MG-50SC

*All dimensions in mm

WE CONNECT ENERGY

www.mgelectrica.com

F-41, MIDC Area, Satpur, Nasik-7, Maharashtra, India. Telfax: +91 253 2350961, 2350163 lugs@mgelectrica.com

For details about our other products and specifications please refer the corporate website

Disclaimer: M.G reserve the right product without prior, as part of its continual improvement programme. Whilst every effort is taken to ensure the accuracy of information contained in the sheet, M.G accepts no liability for matters arising as result of errors or omissions.