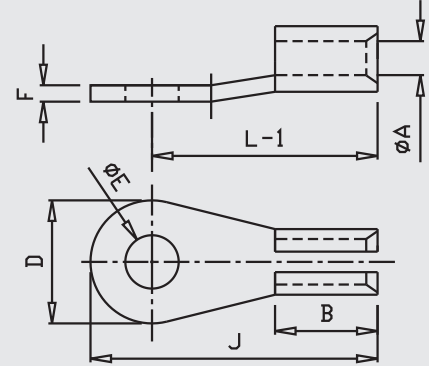




COPPER OPEN-CLOSE TYPE SOLDERING TERMINAL

MATERIAL: ETP COPPER IS 1897:1983
SURFACE: TIN PLATED



Size mm ²	E	A	C	D	F	B	L-1	J	MG CAT NO.	Crimping Tools Code
1.5	4.2	1.6	3.2	7	0.8	5	11.5	15	MGOC-371	
2.5	5.2	2.3	3.9	9	0.8	6	13.5	18	MGOC-372	
4	5.2	2.8	4.8	9	1	6	15.5	20	MGOC-373	
6	6.5	3.6	5.6	12	1	7	18	24	MGOC-374	
10	6.5	4.4	6.4	12	1	9	21	27	MGOC-375	
16	8.2	5.4	7.8	15	1.2	11	24.5	32	MGOC-376	
25	8.2	7	10.2	15	1.6	14	28.5	36	MGOC-377	
35	8.2	8	11.2	18	1.6	15	32	41	MGOC-378	
50	10.2	9.5	13.1	24	1.8	18	38	50	MGOC-379	
70	10.2	11.8	15.8	28	2	23	44	58	MGOC-380	
95	12.7	13.5	18.7	32	2.6	25	50	66	MGOC-381	
120	12.7	15.5	21.1	34	2.8	29	56	73	MGOC-382	
150	12.7	16.5	22.9	38	3.2	30	60	79	MGOC-383	
185	16.2	18.5	25.7	42	3.6	35	66	87	MGOC-384	
225	16.2	21	28.2	44	3.6	40	70	92	MGOC-385	
240	16.2	22.5	30.5	48	4	42	76	100	MGOC-386	
300	20.3	25	34	54	4.5	45	83	110	MGOC-387	
400	20.3	29.5	39.5	62	5	54	94	125	MGOC-388	
500	20.3	32	42.8	62	5.4	58	106	137	MGOC-389	
625	20.3	36	46.8	70	5.4	65	113	148	MGOC-390	

*All dimensions in mm

WE CONNECT ENERGY

www.mgelectrica.com

F-41, MIDC Area, Satpur, Nasik-7, Maharashtra, India. Telfax: +91 253 2350961, 2350163 lugs@mgelectrica.com

For details about our other products and specifications please refer the corporate website

Disclaimer: M.G reserve the right product without prior, as part of its continual improvement programme. Whilst every effort is taken to ensure the accuracy of information contained in the sheet, M.G accepts no liability for matters arising as result of errors or omissions.