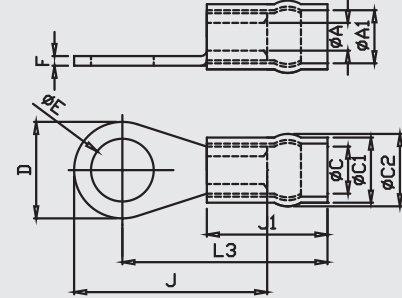


COPPER RING INSULATED WITH METAL REINFORCEMENT TERMINAL

MATERIAL ETP COPPER IS : 1897:1983
SURFACE: TIN PLATED

1.5 sq. mm. **RED**
2.5 sq. mm. **BLUE**
4-6 sq. mm. **YELLOW**



Size mm ²	E	A	C	D	F	B	H	J	J-1	A-1	C-1	C-2	L-3	MG CAT NO.	Crimping Tools Code
1.5	2.2	1.6	3.2	6	0.8	5	4	14	10	3.6	4.8	5.4	16	MGRR-7435	MG-10I
1.5	2.6	1.6	3.2	6	0.8	5	4	14	10	3.6	4.8	5.4	16	MGRR-7436	MG-10I
1.5	3.2	1.6	3.2	6	0.8	5	4	14	10	3.6	4.8	5.4	16	MGRR-7437	MG-10I
1.5	3.7	1.6	3.2	6	0.8	5	4	14	10	3.6	4.8	5.4	16	MGRR-7438	MG-10I
1.5	4.2	1.6	3.2	6	0.8	5	4	14	10	3.6	4.8	5.4	16	MGRR-7439	MG-10I
1.5	3.2	1.6	3.2	6.8	0.8	5	3	13	10	3.6	4.8	5.4	14.6	MGRR-7440	MG-10I
1.5	3.7	1.6	3.2	6.8	0.8	5	3	13	10	3.6	4.8	5.4	14.6	MGRR-7441	MG-10I
1.5	4.2	1.6	3.2	6.8	0.8	5	3	13	10	3.6	4.8	5.4	14.6	MGRR-7442	MG-10I
1.5	3.2	1.6	3.2	8	0.8	5	5	16	10	3.6	4.8	5.4	17	MGRR-7443	MG-10I
1.5	4.2	1.6	3.2	8	0.8	5	5	16	10	3.6	4.8	5.4	17	MGRR-7444	MG-10I
1.5	5.2	1.6	3.2	8	0.8	5	5	16	10	3.6	4.8	5.4	17	MGRR-7445	MG-10I
1.5	4.2	1.6	3.2	7	0.8	5	5	14.5	10	3.6	4.8	5.4	16	MGRR-7446	MG-10I
1.5	4.2	1.6	3.2	10	0.8	5	6	18	10	3.6	4.8	5.4	18	MGRR-7447	MG-10I
1.5	5.2	1.6	3.2	10	0.8	5	6	18	10	3.6	4.8	5.4	18	MGRR-7448	MG-10I
1.5	6.4	1.6	3.2	10	0.8	5	6	18	10	3.6	4.8	5.4	18	MGRR-7449	MG-10I
1.5	6.4	1.6	3.2	12	0.8	5	6	18	10	3.6	4.8	5.4	17	MGRR-7450	MG-10I
2.5	3.2	2.3	3.9	6.5	0.8	5	3.5	12.7	10	4.4	5.4	6	17.7	MGRR-7451	MG-10I
2.5	3.7	2.3	3.9	6.5	0.8	5	3.5	12.7	10	4.4	5.4	6	17.7	MGRR-7452	MG-10I
2.5	3.5	2.3	3.9	8	0.8	5	5	16	10	4.4	5.4	6	17	MGRR-7453	MG-10I
2.5	4.2	2.3	3.9	8	0.8	5	5	16	10	4.4	5.4	6	17	MGRR-7454	MG-10I
2.5	5.2	2.3	3.9	8	0.8	5	5	16	10	4.4	5.4	6	17	MGRR-7455	MG-10I

*All dimensions in mm

WE CONNECT ENERGY

www.mgelectrica.com

F-41, MIDC Area, Satpur, Nasik-7, Maharashtra, India. Telfax: +91 253 2350961, 2350163 lugs@mgelectrica.com

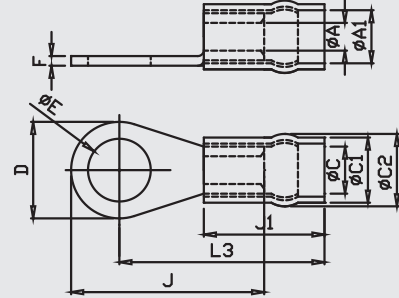
For details about our other products and specifications please refer the corporate website

Disclaimer: M.G reserve the right product without prior, as part of its continual improvement programme. Whilst every effort is taken to ensure the accuracy of information contained in the sheet, M.G accepts no liability for matters arising as result of errors or omissions.

COPPER RING INSULATED WITH METAL REINFORCEMENT TERMINAL

MATERIAL ETP COPPER IS : 1897:1983
SURFACE: TIN PLATED

1.5 sq. mm. **RED**
2.5 sq. mm. **BLUE**
4-6 sq. mm. **YELLOW**



Size mm ²	E	A	C	D	F	B	H	J	J-1	A-1	C-1	C-2	L-3	MG CAT NO.	Crimping Tools Code
2.5	5.2	2.3	3.9	10	0.8	5	7	18	10	4.4	5.4	6	18	MGRR-7456	MG-10I
2.5	6.4	2.3	3.9	10	0.8	5	7	18	10	4.4	5.4	6	18	MGRR-7457	MG-10I
2.5	5.2	2.3	3.9	12	0.8	5	9	22	10	4.4	5.4	6	21	MGRR-7458	MG-10I
2.5	6.4	2.3	3.9	12	0.8	5	9	22	10	4.4	5.4	6	21	MGRR-7459	MG-10I
2.5	8.2	2.3	3.9	12	0.8	5	9	22	10	4.4	5.4	6	21	MGRR-7460	MG-10I
2.5	6.4	2.3	3.9	16	0.8	5	10	25	10	4.4	5.4	6	22	MGRR-7461	MG-10I
2.5	8.2	2.3	3.9	16	0.8	5	10	25	10	4.4	5.4	6	22	MGRR-7462	MG-10I
2.5	10.2	2.3	3.9	16	0.8	5	10	25	10	4.4	5.4	6	22	MGRR-7463	MG-10I
2.5	10.2	2.3	3.9	18	0.8	5	14	29	10	4.4	5.4	6	25	MGRR-7464	MG-10I
2.5	12.7	2.3	3.9	18	0.8	5	14	29	10	4.4	5.4	6	25	MGRR-7465	MG-10I
4-6	4.2	3.5	5.5	8	1	6	5	17	15	6.4	7.1	8.6	22	MGRR-7466	MG-10I
4-6	5.2	3.5	5.5	8	1	6	5	17	15	6.4	7.1	8.6	22	MGRR-7467	MG-10I
4-6	4.2	3.5	5.5	10	1	6	5	19	15	6.4	7.1	8.6	23	MGRR-7468	MG-10I
4-6	5.2	3.5	5.5	10	1	6	5	19	15	6.4	7.1	8.6	23	MGRR-7469	MG-10I
4-6	5.2	3.5	5.5	8	1	6	9.8	22.8	15	6.4	7.1	8.6	31.8	MGRR-7470	MG-10I
4-6	5.2	3.5	5.5	12	1	6	6	22	15	6.4	7.1	8.6	23	MGRR-7471	MG-10I
4-6	6.4	3.5	5.5	12	1	6	6	20	15	6.4	7.1	8.6	23	MGRR-7472	MG-10I
4-6	8.2	3.5	5.5	12	1	6	6	20	15	6.4	7.1	8.6	23	MGRR-7473	MG-10I
4-6	5.2	3.5	5.5	12	1	6	7	22	15	6.4	7.1	8.6	25	MGRR-7474	MG-10I
4-6	6.4	3.5	5.5	12	1	6	7	22	15	6.4	7.1	8.6	25	MGRR-7475	MG-10I
4-6	6.4	3.5	5.5	14	1	6	10.5	25.5	15	6.4	7.1	8.6	27.5	MGRR-7476	MG-10I

*All dimensions in mm

WE CONNECT ENERGY

www.mgelectrica.com

F-41, MIDC Area, Satpur, Nasik-7, Maharashtra, India. Telfax: +91 253 2350961, 2350163 lugs@mgelectrica.com

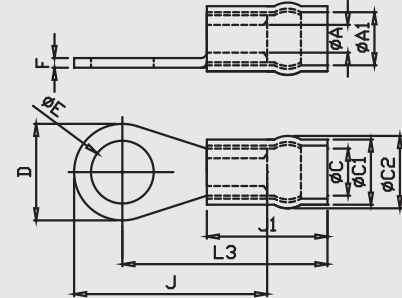
For details about our other products and specifications please refer the corporate website

Disclaimer: M.G reserve the right product without prior, as part of its continual improvement programme. Whilst every effort is taken to ensure the accuracy of information contained in the sheet, M.G accepts no liability for matters arising as result of errors or omissions.

COPPER RING INSULATED WITH METAL REINFORCEMENT TERMINAL

MATERIAL ETP COPPER IS : 1897:1983
SURFACE: TIN PLATED

1.5 sq. mm. **RED**
2.5 sq. mm. **BLUE**
4-6 sq. mm. **YELLOW**



Size mm ²	E	A	C	D	F	B	H	J	J-1	A-1	C-1	C-2	L-3	MG CAT NO.	Crimping Tools Code
4-6	8.2	3.5	5.5	14	1	6	10.5	25.5	15	6.4	7.1	8.6	27.5	MGRR-7477	MG-10I
4-6	9.7	3.5	5.5	14	1	6	10.5	25.5	15	6.4	7.1	8.6	27.5	MGRR-7478	MG-10I
4-6	8.2	3.5	5.5	16	1	6	13	30	15	6.4	7.1	8.6	31	MGRR-7479	MG-10I
4-6	10.2	3.5	5.5	16	1	6	13	30	15	6.4	7.1	8.6	31	MGRR-7480	MG-10I
4-6	8.2	3.5	5.5	18	1	6	12	30	15	6.4	7.1	8.6	30	MGRR-7481	MG-10I
4-6	10.2	3.5	5.5	18	1	6	12	30	15	6.4	7.1	8.6	30	MGRR-7482	MG-10I
4-6	12.7	3.5	5.5	18	1	6	12	30	15	6.4	7.1	8.6	30	MGRR-7483	MG-10I

*All dimensions in mm

WE CONNECT ENERGY

www.mgelectrica.com

F-41, MIDC Area, Satpur, Nasik-7, Maharashtra, India. Telfax: +91 253 2350961, 2350163 lugs@mgelectrica.com

For details about our other products and specifications please refer the corporate website

Disclaimer: M.G reserve the right product without prior, as part of its continual improvement programme. Whilst every effort is taken to ensure the accuracy of information contained in the sheet, M.G accepts no liability for matters arising as result of errors or omissions.