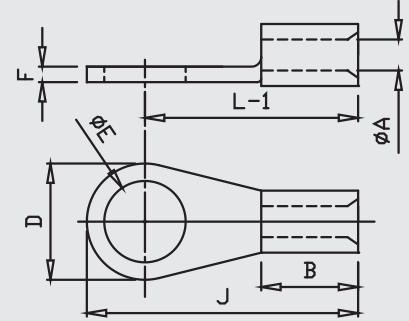




COPPER RING TYPE TERMINAL

MATERIAL ETP COPPER IS : 1897:1983
SURFACE: TIN PLATED



Size mm ²	E	A	C	D	F	B	H	L-1	J	MG CAT NO.	Crim- ping Tools Code
0.5	3.2	1.2	2.8	6	0.8	5	6	10.5	14	MGR-0.5 E-3	MG-10
0.5	4.2	1.2	2.8	8	0.8	5	7	12	16	MGR-0.5 E-4	MG-10
0.5	5.2	1.2	2.8	8	0.8	5	7	12	16	MGR-0.5 E-5	MG-10
1	4.2	1.3	2.9	7	0.8	5	4	10.5	14	MG-001	MG-10
1.5	3.2	1.6	3.2	6.8	0.8	5	3.6	9.6	13	MGR-7153	MG-10
1.5	3.7	1.6	3.2	6.8	0.8	5	3.6	9.6	13	MGR-7048	MG-10
1.5	4.2	1.6	3.2	6.8	0.8	5	3.6	9.6	13	MGR-7049	MG-10
1.5	4.2	1.6	3.2	7	0.8	5	5	11	14.5	MGR-7154	MG-10
1.5	2.2	1.6	3.2	6	0.8	5	4	11	14	MGR-7103	MG-10
1.5	2.6	1.6	3.2	6	0.8	5	4	11	14	MGR-7000	MG-10
1.5	3.2	1.6	3.2	6	0.8	5	4	11	14	MGR-7001	MG-10
1.5	3.7	1.6	3.2	6	0.8	5	4	11	14	MGR-7002	MG-10
1.5	4.2	1.6	3.2	6	0.8	5	4	11	14	MGR-7003	MG-10
1.5	3.2	1.6	3.2	8	0.8	5	5	12	16	MGR-7104	MG-10
1.5	4.2	1.6	3.2	8	0.8	5	5	12	16	MGR-7004	MG-10
1.5	5.2	1.6	3.2	8	0.8	5	5	12	16	MGR-7005	MG-10
1.5	4.2	1.6	3.2	10	0.8	5	6	13	18	MGR-7105	MG-10
1.5	5.2	1.6	3.2	10	0.8	5	6	13	18	MGR-7006	MG-10
1.5	6.4	1.6	3.2	10	0.8	5	6	13	18	MGR-7007	MG-10
1.5	6.4	1.6	3.2	12	0.8	5	6	12	18	MGR-7106	MG-10
1.5	8.2	1.6	3.2	12	0.8	5	9	16	22	MGR-1.5-8	MG-10

*All dimensions in mm

WE CONNECT ENERGY

www.mgelectrica.com

F-41, MIDC Area, Satpur, Nasik-7, Maharashtra, India. Telfax: +91 253 2350961, 2350163 lugs@mgelectrica.com

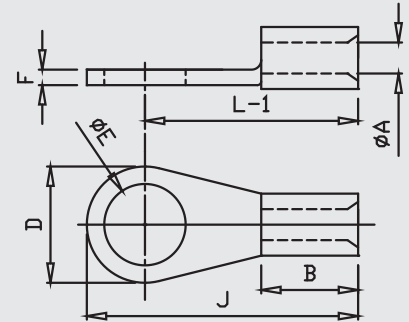
For details about our other products and specifications please refer the corporate website

Disclaimer: M.G reserve the right product without prior, as part of its continual improvement programme. Whilst every effort is taken to ensure the accuracy of information contained in the sheet, M.G accepts no liability for matters arising as result of errors or omissions.



COPPER RING TYPE TERMINAL

MATERIAL ETP COPPER IS : 1897:1983
SURFACE: TIN PLATED



Size mm ²	E	A	C	D	F	B	H	L-1	J	MG CAT NO.	Crim- ping Tools Code
2.5	3.2	2.3	3.9	6.5	0.8	5	3.5	9.5	12.7	MGR-7107	MG-10
2.5	3.7	2.3	3.9	6.5	0.8	5	3.5	9.5	12.7	MGR-7008	MG-10
2.5	3.7	2.3	3.9	8	0.8	5	5	12	16	MGR-7108	MG-10
2.5	4.2	2.3	3.9	8	0.8	5	5	12	16	MGR-7009	MG-10
2.5	5.2	2.3	3.9	8	0.8	5	5	12	16	MGR-7010	MG-10
2.5	5.2	2.3	3.9	10	0.8	5	7	13	18	MGR-7109	MG-10
2.5	6.4	2.3	3.9	10	0.8	5	7	13	18	MGR-7011	MG-10
2.5	5.2	2.3	3.9	12	0.8	5	9	16	22	MGR-7110	MG-10
2.5	6.4	2.3	3.9	12	0.8	5	9	16	22	MGR-7012	MG-10
2.5	8.2	2.3	3.9	12	0.8	5	9	16	22	MGR-7013	MG-10
2.5	6.4	2.3	3.9	16	0.8	5	10	17	25	MGR-7111	MG-10
2.5	8.2	2.3	3.9	16	0.8	5	10	17	25	MGR-7014	MG-10
2.5	10.2	2.3	3.9	16	0.8	5	10	17	25	MGR-7015	MG-10
2.5	10.2	2.3	3.9	18	0.8	5	14	20	29	MGR-7151	MG-10
2.5	12.7	2.3	3.9	18	0.8	5	14	20	29	MGR-7047	MG-10
4-6	5.2	3.5	5.5	8	1	6	5	13	17	MGR-7050	MG-10
4-6	4.2	3.5	5.5	8	1	6	5	13	17	MGR-7155	MG-10
4-6	4.2	3.5	5.5	10	1	6	5	14	19	MGR-7112	MG-10
4-6	5.2	3.5	5.5	10	1	6	5	14	19	MGR-7016	MG-10
4-6	5.2	3.5	5.5	12	1	6	6	14	20	MGR-7113	MG-10
4-6	6.4	3.5	5.5	12	1	6	6	14	20	MGR-7017	MG-10

*All dimensions in mm

WE CONNECT ENERGY

www.mgelectrica.com

F-41, MIDC Area, Satpur, Nasik-7, Maharashtra, India. Telfax: +91 253 2350961, 2350163 lugs@mgelectrica.com

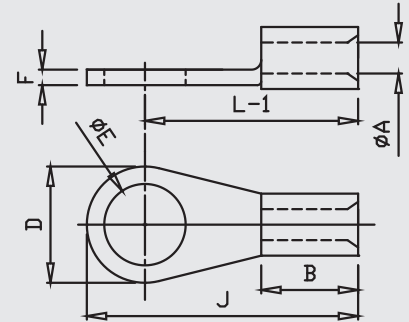
For details about our other products and specifications please refer the corporate website

Disclaimer: M.G reserve the right product without prior, as part of its continual improvement programme. Whilst every effort is taken to ensure the accuracy of information contained in the sheet, M.G accepts no liability for matters arising as result of errors or omissions.



COPPER RING TYPE TERMINAL

MATERIAL ETP COPPER IS : 1897:1983
SURFACE: TIN PLATED



Size mm ²	E	A	C	D	F	B	H	L-1	J	MG CAT NO.	Crim- ping Tools Code
4-6	8.2	3.5	5.5	12	1	6	6	14	20	MGR-7018	MG-10
4-6	5.2	3.5	5.5	12	1	6	7	16	22	MGR-7114	MG-10
4-6	6.4	3.5	5.5	12	1	6	7	16	22	MGR-7019	MG-10
4-6	5.2	3.5	5.5	8	1	6	9.8	18.8	22.8	MGR-7157	MG-10
4-6	6.4	3.5	5.5	14	1	6	10.5	18.5	25.5	MGR-7115	MG-10
4-6	8.2	3.5	5.5	14	1	6	10.5	18.5	25.5	MGR-7020	MG-10
4-6	9.7	3.5	5.5	14	1	6	10.5	18.5	25.5	MGR-7021	MG-10
4-6	8.2	3.5	5.5	16	1	6	13	22	30	MGR-7116	MG-10
4-6	10.2	3.5	5.5	16	1	6	13	22	30	MGR-7022	MG-10
4-6	8.2	3.5	5.5	18	1	6	12	21	30	MGR-7117	MG-10
4-6	10.2	3.5	5.5	18	1	6	12	21	30	MGR-7023	MG-10
4-6	12.7	3.5	5.5	18	1	6	12	21	30	MGR-7024	MG-10
10	4.2	4.3	6.3	10	1	8	4	15	20	MGR-7119	MG-10
10	5.2	4.3	6.3	10	1	8	4	15	20	MGR-7026	MG-10
10	4.2	4.3	6.3	10	1	8	7	17	22	MGR-7118	MG-10
10	5.2	4.3	6.3	10	1	8	7	17	22	MGR-7025	MG-10
10	6.4	4.3	6.3	12	1	8	7	17	23	MGR-7120	MG-10
10	8.2	4.3	6.3	16	1	8	7	19	27	MGR-7121	MG-10
10	8.2	4.3	6.3	18	1	8	9	21	30	MGR-7122	MG-10
10	10.2	4.3	6.3	18	1	8	9	21	30	MGR-7027	MG-10
10	12.7	4.3	6.3	22	1	8	10	23	34	MGR-7028	MG-10

*All dimensions in mm

WE CONNECT ENERGY

www.mgelectrica.com

F-41, MIDC Area, Satpur, Nasik-7, Maharashtra, India. Telfax: +91 253 2350961, 2350163 lugs@mgelectrica.com

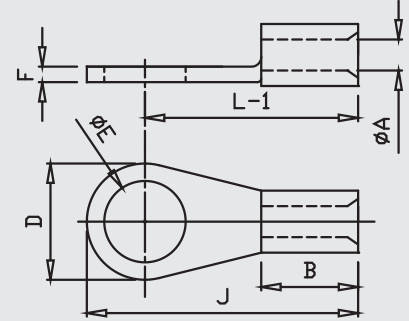
For details about our other products and specifications please refer the corporate website

Disclaimer: M.G reserve the right product without prior, as part of its continual improvement programme. Whilst every effort is taken to ensure the accuracy of information contained in the sheet, M.G accepts no liability for matters arising as result of errors or omissions.



COPPER RING TYPE TERMINAL

MATERIAL ETP COPPER IS : 1897:1983
SURFACE: TIN PLATED



Size mm ²	E	A	C	D	F	B	H	L-1	J	MG CAT NO.	Crim- ping Tools Code
10	10.2	4.3	6.3	22	1	8	10	23	34	MGR-7123	MG-10
16	5.2	5.6	8	10	1.2	10	6	19	24	MGR-7124	MG-50SC
16	5.2	5.6	8	12	1.2	10	6	20	26	MGR-7125	MG-50SC
16	6.4	5.6	8	12	1.2	10	6	20	26	MGR-7029	MG-50SC
16	6.4	5.6	8	16	1.2	10	8	22	30	MGR-7126	MG-50SC
16	8.2	5.6	8	16	1.2	10	8	22	30	MGR-7030	MG-50SC
16	9.7	5.6	8	16	1.2	10	8	22	30	MGR-7031	MG-50SC
16	8.2	5.6	8	18	1.2	10	10	24	33	MGR-7127	MG-50SC
16	10.2	5.6	8	18	1.2	10	10	24	33	MGR-7032	MG-50SC
16	10.2	5.6	8	22	1.2	10	8	24	35	MGR-7128	MG-50SC
16	12.7	5.6	8	22	1.2	10	8	24	35	MGR-7033	MG-50SC
25	6.4	7.5	11.1	16	1.8	11	6	22	30	MGR-7129	MG-50SC
25	8.2	7.5	11.1	16	1.8	11	6	22	30	MGR-7034	MG-50SC
25	10.2	7.5	11.1	16	1.8	11	6	22	30	MGR-7035	MG-50SC
25	6.4	7.5	11.1	12	1.8	11	10	25	31	MGR-7156	MG-50SC
25	8.2	7.5	11.1	12	1.8	11	10	25	31	MGR-7051	MG-50SC
25	6.4	7.5	11.1	16	1.8	11	10	25	33	MGR-7130	MG-50SC
25	8.2	7.5	11.1	16	1.8	11	10	25	33	MGR-7036	MG-50SC
25	10.2	7.5	11.1	18	1.8	11	9	25	34	MGR-7131	MG-50SC
25	10.2	7.5	11.1	22	1.8	11	14	31	42	MGR-7132	MG-50SC
25	12.7	7.5	11.1	22	1.8	11	14	31	42	MGR-7037	MG-50SC

*All dimensions in mm

WE CONNECT ENERGY

www.mgelectrica.com

F-41, MIDC Area, Satpur, Nasik-7, Maharashtra, India. Telfax: +91 253 2350961, 2350163 lugs@mgelectrica.com

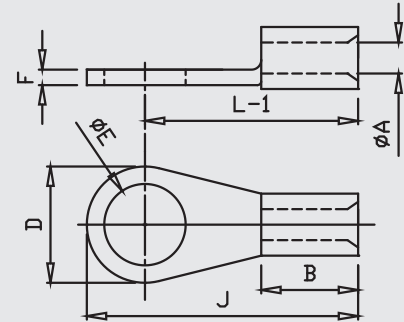
For details about our other products and specifications please refer the corporate website

Disclaimer: M.G reserve the right product without prior, as part of its continual improvement programme. Whilst every effort is taken to ensure the accuracy of information contained in the sheet, M.G accepts no liability for matters arising as result of errors or omissions.



COPPER RING TYPE TERMINAL

MATERIAL ETP COPPER IS : 1897:1983
SURFACE: TIN PLATED



Size mm ²	E	A	C	D	F	B	H	L-1	J	MG CAT NO.	Crim- ping Tools Code
35	6.4	9	12.6	16	1.8	12	6	23	31	MGR-7133	MG-50SC
35	8.2	9	12.6	16	1.8	12	6	23	31	MGR-7038	MG-50SC
35	8.2	9	12.6	18	1.8	12	10	27	36	MGR-7134	MG-50SC
35	10.2	9	12.6	18	1.8	12	10	27	36	MGR-7039	MG-50SC
35	10.2	9	12.6	22	1.8	12	15	31	42	MGR-7135	MG-50SC
35	12.7	9	12.6	22	1.8	12	15	31	42	MGR-7040	MG-50SC
50	8.2	10.5	14.1	18	1.8	16	12	34	43	MGR-7136	MG-50SC
50	10.2	10.5	14.1	18	1.8	16	12	34	43	MGR-7041	MG-50SC
50	10.2	10.5	14.1	22	1.8	16	9	32	43	MGR-7137	MG-50SC
50	10.2	10.5	14.1	24	1.8	16	14	36	48	MGR-7138	MG-50SC
50	12.7	10.5	14.1	24	1.8	16	14	36	48	MGR-7042	MG-50SC
50	16.2	10.5	14.1	32	1.8	16	15	38	54	MGR-7139	MG-50SC
70	10.2	12	16	22	2	18	11	36	47	MGR-7140	MG-120
70	12.7	12	16	22	2	18	11	36	47	MGR-7043	MG-120
70	12.7	12	16	24	2	18	10	36	48	MGR-7141	MG-120
70	16.2	12	16	28	2	18	16	40	54	MGR-7142	MG-120
95	10.2	13.5	18.1	22	2.3	20	10	35	46	MGR-7143	MG-120H
95	10.2	13.5	18.1	24	2.3	20	12	38	50	MGR-7144	MG-120H
95	12.7	13.5	18.1	24	2.3	20	12	38	50	MGR-7044	MG-120H
95	16.2	13.5	18.1	28	2.3	20	17	44	58	MGR-7145	MG-120H
120	10.2	15	20.2	26	2.6	22	7	39	52	MGR-7146/A	MG-120H

*All dimensions in mm

WE CONNECT ENERGY

www.mgelectrica.com

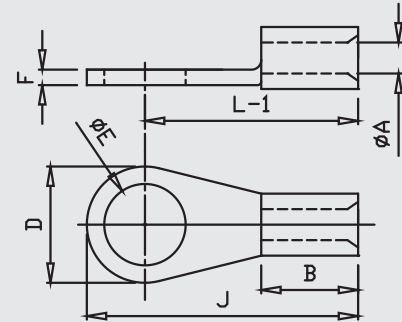
F-41, MIDC Area, Satpur, Nasik-7, Maharashtra, India. Telfax: +91 253 2350961, 2350163 lugs@mgelectrica.com

For details about our other products and specifications please refer the corporate website

Disclaimer: M.G reserve the right product without prior, as part of its continual improvement programme. Whilst every effort is taken to ensure the accuracy of information contained in the sheet, M.G accepts no liability for matters arising as result of errors or omissions.

COPPER RING TYPE TERMINAL

MATERIAL ETP COPPER IS : 1897:1983
SURFACE: TIN PLATED



Size mm ²	E	A	C	D	F	B	H	L-1	J	MG CAT NO.	Crim- ping Tools Code
120	12.7	15	20.2	26	2.6	22	7	39	52	MGR-7146	MG-120H
120	16.2	15	20.2	32	2.6	22	19	48	64	MGR-7147	MG-120H
120	20.3	15	20.2	40	2.6	22	20	52	72	MGR-7148	MG-120H
150	12.7	16.5	23.7	34	3.6	24	16	49	66	MGR-7149	MG-300H
150	16.2	16.5	23.7	34	3.6	24	16	49	66	MGR-7045	MG-300H
150	16.2	16.5	23.7	40	3.6	24	20	54	74	MGR-7150	MG-300H
150	20	16.5	23.7	40	3.6	24	20	54	74	MGR-7046	MG-300H

*All dimensions in mm

WE CONNECT ENERGY

www.mgelectrica.com

F-41, MIDC Area, Satpur, Nasik-7, Maharashtra, India. Telfax: +91 253 2350961, 2350163 lugs@mgelectrica.com

For details about our other products and specifications please refer the corporate website

Disclaimer: M.G reserve the right product without prior, as part of its continual improvement programme. Whilst every effort is taken to ensure the accuracy of information contained in the sheet, M.G accepts no liability for matters arising as result of errors or omissions.