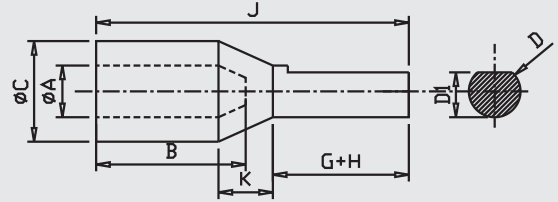




## ALUMINUM REDUCER TYPE TERMINAL ENDS

Material Aluminium IS :5082



Size mm <sup>2</sup>	A	C	D	D-1	B	K	G+H	J	MG CAT NO.	Crimping Tools Code
2.5	2	5.5	4.5	4	7	4	10	21	MGAWP-1	MG-10
2.5	2.6	5.5	3.8	3.3	7	4	10	21	MGAWP-7	MG-10
4	2.9	5.5	4.5	4	7	4	10	21	MGAWP-15	MG-10
4	2.9	5.5	3.8	3.3	7	4	10	21	MGAWP-16	MG-10
6	3.5	5.5	4.5	4	7	4	10	21	MGAWP-17	MG-10
6	3.5	5.5	3.8	3.3	7	4	10	21	MGAWP-18	MG-10
10	3.8	7.4	4.5	4	9	4	10	23	MGAWP-19	MG-10
10	3.8	7.4	3.8	3.3	9	4	10	23	MGAWP-20	MG-10
10	4.4	7.4	4.5	4	9	4	10	23	MGAWP-21	MG-10
10	4.4	7.4	3.8	3.3	9	4	10	23	MGAWP-22	MG-10
16	5.4	8.3	6	5.5	13	5	15	33	MGAWP-23	MG-50BS
16	5.4	8.3	6	5.5	13	5	20	38	MGAWP-24	MG-50BS
16	5.4	8.3	3.8	3.3	13	5	13	31	MGAWP-2	MG-50BS
25	7	10	6	5.5	16	5	15	36	MGAWP-25	MG-50BS
25	7	10	7.5	6.5	16	5	20	41	MGAWP-3	MG-50BS
35	8	10.8	7.5	6.5	18	5	20	43	MGAWP-4	MG-50BS
50	9.3	13	7.5	6.5	22	5	20	47	MGAWP-26	MG-70H
50	10.4	14	14	13	22	7	24	53	MGAWP-5	MG-70H
70	11.6	16	7.5	6.5	26	5	20	51	MGAWP-27	MG-70H
70	11.6	16	11.5	10.5	26	5	25	56	MGAWP-6	MG-70H
70	11.6	16	11.5	10.5	26	5	32	63	MGAWP-28	MG-70H

\*All dimensions in mm

WE CONNECT ENERGY

[www.mgelectrica.com](http://www.mgelectrica.com)

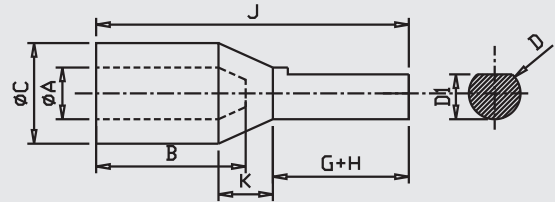
F-41, MIDC Area, Satpur, Nasik-7, Maharashtra, India. Telfax: +91 253 2350961, 2350163 lugs@mgelectrica.com

For details about our other products and specifications please refer the corporate website

Disclaimer: M.G reserve the right product without prior, as part of its continual improvement programme. Whilst every effort is taken to ensure the accuracy of information contained in the sheet, M.G accepts no liability for matters arising as result of errors or omissions.

## ALUMINUM REDUCER TYPE TERMINAL ENDS

Material Aluminium IS :5082



Size mm <sup>2</sup>	A	C	D	D-1	B	K	G+H	J	MG CAT NO.	Crimping Tools Code
95	12.9	17.1	11.5	10.5	28	6	25	59	MGAWP-29	MG-120H
95	12.9	17.1	15.6	14	28	6	27	61	MGAWP-8	MG-120H
95	12.9	17.1	7.5	6.5	28	6	22	56	MGAWP-31	MG-120H
95	12.9	17.1	12.8	11.8	28	6	32	66	MGAWP-32	MG-120H
120	15	19.6	11.5	10.5	32	6	25	63	MGAWP-33	MG-120H
120	15	19.6	7.5	6.5	32	6	22	60	MGAWP-34	MG-120H
120	15	19.6	11.5	10.5	32	6	32	70	MGAWP-35	MG-120H
120	15	19.6	15.6	14	32	6	32	70	MGAWP-36	MG-120H
150	16.5	21.5	15.6	14	34	6	32	72	MGAWP-10	MG-300H
150	16.5	21.5	11.5	10.5	34	6	32	72	MGAWP-37	MG-300H
185	18.5	24	15.6	14	36	6	32	74	MGAWP-30	MG-300H
185	18.5	24	11.5	10.5	36	6	32	74	MGAWP-38	MG-300H
225	21	27	15.6	14	40	8	32	80	MGAWP-39	MG-300H
225	21	27	21	18	40	8	42	90	MGAWP-46	MG-300H
225	21	27	16	15	40	8	42	90	MGAWP-42	MG-300H
240	22	28	16	15	44	8	42	94	MGAWP-44	MG-300H
240	22	28	15.6	14	44	8	32	84	MGAWP-43	MG-300H
300	24	31	16	15	47	8	42	97	MGAWP-45	MG-300H
300	24	31	15.6	14	47	8	32	87	MGAWP-47	MG-300H

\*All dimensions in mm

WE CONNECT ENERGY

[www.mgelectrica.com](http://www.mgelectrica.com)

F-41, MIDC Area, Satpur, Nasik-7, Maharashtra, India. Telfax: +91 253 2350961, 2350163 lugs@mgelectrica.com

For details about our other products and specifications please refer the corporate website

Disclaimer: M.G reserve the right product without prior, as part of its continual improvement programme. Whilst every effort is taken to ensure the accuracy of information contained in the sheet, M.G accepts no liability for matters arising as result of errors or omissions.