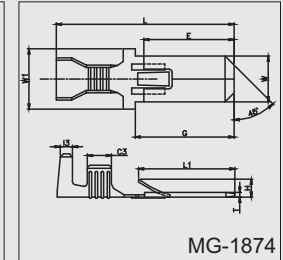
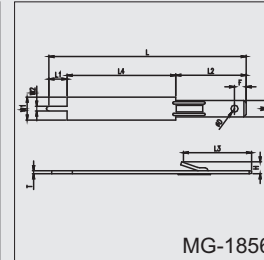
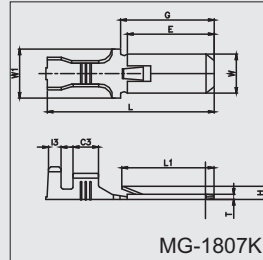
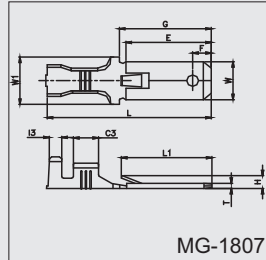
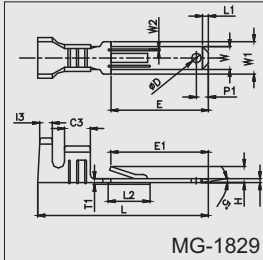
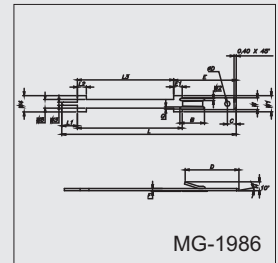
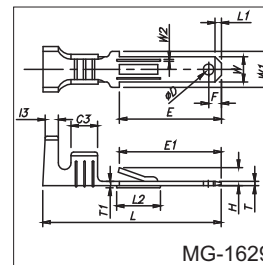
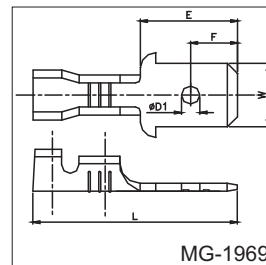
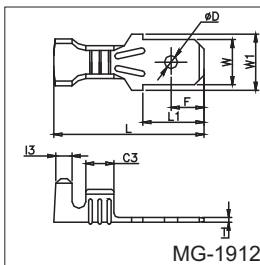


MALE WITH LANCING (TERMINAL LOCK)



MG CAT No.	TAB Size mm	Cable Size mm ²	Description	L	H	W	APPLICABLE MATING TERMINAL	MATERIAL	"STD PACKING QTY.(NOS) CHAIN"
MG-1829	2.8 × 0.5	0.5 - 1.25	2.8 × 0.50 Male	20.70	0.50	2.80	1828	BRASS	10,000
MG-1807	6.0 × 0.8	0.5 - 1.5	6.0 × 0.80 Male	24.70	0.80	6.00	1970	BRASS	5,000
MG-1807K	6.0 × 0.8	0.5 - 1.5	6.0 × 0.80 Without Hole	24.70	0.80	6.00	1970	BRASS	5,000
MG-1856	2.8 × 0.5	N.A.	2.8 × 0.50 Male Without Barrel	34.00	0.50	2.80	1828	BRASS	2,000(L)
MG-1874	7.6 × 0.8	2.0 - 4.0	7.6 × 0.80 Male	29.60	0.80	7.60	1863	BRASS	2,000
MG-1986	2.8 × 0.5	N.A.	2.8 × 0.50 Long Male	39.00	0.50	2.80	1828	BRASS	2,000(L)

MALE PLAIN



MG CAT No.	TAB Size mm	Cable Size mm ²	Description	L	H	W	APPLICABLE MATING TERMINAL	MATERIAL	"STD PACKING QTY.(NOS) CHAIN"
MG-1912	4.8 × 0.8	1.0 - 2.0	4.8 × 0.50 MALE	16.00	0.80	4.80	N.A.	BRASS	8,000
MG-1969	6.3 × 0.8	1.0 - 1.5	6.3 × 0.80 MALE	20.20	0.80	6.30	N.A.	BRASS	5,000
MG-1629	2.8 × 0.5	0.5 - 1.25	2.8 × 0.50 MALE	20.70	0.50	2.80	N.A.	BRASS	4,000

*All dimensions in mm

WE CONNECT ENERGY

www.mgelectrica.com

F-41, MIDC Area, Satpur, Nasik-7, Maharashtra, India. Telfax: +91 253 2350961, 2350163 lugs@mgelectrica.com

For details about our other products and specifications please refer the corporate website

Disclaimer: M.G reserve the right product without prior, as part of its continual improvement programme. Whilst every effort is taken to ensure the accuracy of information contained in the sheet, M.G accepts no liability for matters arising as result of errors or omissions.