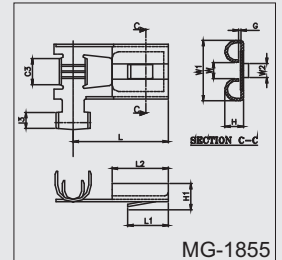
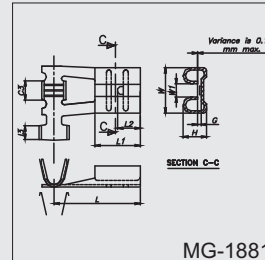
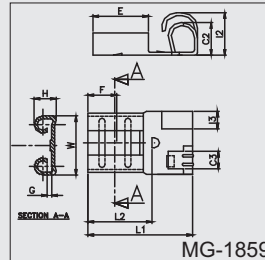
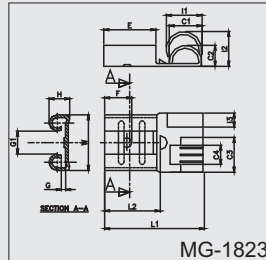
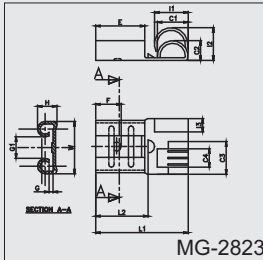
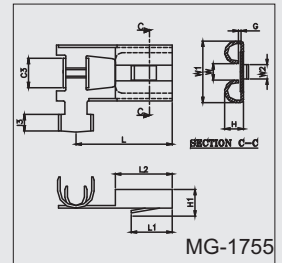


## SNAP - ON FEMALE ANGLE FASTENERS



MG CAT No.	TAB Size mm	Cable Size mm <sup>2</sup>	Description	L	H	W	APPLICABLE MATING TERMINAL	MATERIAL	"STD PACKING QTY.(NOS) CHAIN"
MG-2823	6.3 × 0.8	1.0 - 2.5	6.3 × 0.80 Angle Fastener	15.00	3.00	8.15	1969	PHOS/BRO	1,250(L)
MG-1823	6.3 × 0.8	1.0 - 2.5	6.3 × 0.80 Angle Fastener	15.00	3.00	8.15	1969	BRASS	1,250(L)
MG-1859	4.8 × 0.5	0.5 - 1.0	4.8 × 0.50 Angle Fastener Close	11.50	2.35	6.00	1883	BRASS	5000
MG-1881	6.3 × 0.8	0.75 - 1.5	6.3 × 0.80 Female	16.20	3.35	7.50	1969	BRASS	3,000
MG-1855	8.0 × 0.8	0.75 - 2.5	8.0 × 0.80 Flasher	18.50	3.20	9.00	N.A.	BRASS	2,000
MG-1755	8.0 × 0.8	0.5 - 0.75	8.0 × 0.80 Flasher	17.50	3.20	9.00	N.A.	BRASS	2,000

\*All dimensions in mm

WE CONNECT ENERGY

[www.mgelectrica.com](http://www.mgelectrica.com)

F-41, MIDC Area, Satpur, Nasik-7, Maharashtra, India. Telfax: +91 253 2350961, 2350163 [lugs@mgelectrica.com](mailto:lugs@mgelectrica.com)

**For details about our other products and specifications please refer the corporate website**

Disclaimer: M.G reserve the right product without prior, as part of its continual improvement programme. Whilst every effort is taken to ensure the accuracy of information contained in the sheet, M.G accepts no liability for matters arising as result of errores or omissions.